



1 Product & Substrate Temperature

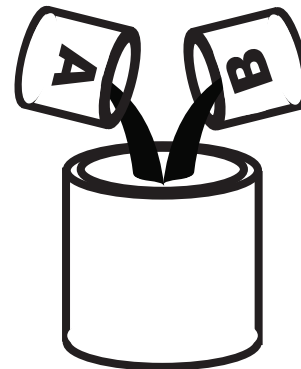


25°C (77°F)
20°C (68°F)

20-25 °C (68-77 °F)*



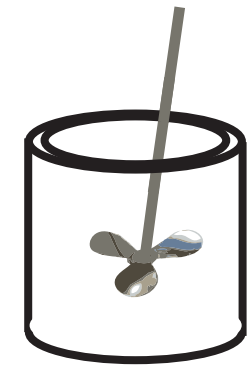
2 Product Preparation



5 Part Component A
1 Part Component B



3 Mixing



Paint must be thoroughly mixed.

4 Spraying Viscosity



22 seconds**

As necessary**

conventional

airless

**Viscosity: 22 seconds/as necessary
using a Ford 4 Cup (white)**

** Spraying viscosity and thinning will depend on ambient conditions, spray equipment used, and on the desired surface finish.



5 Spray Gun Setup

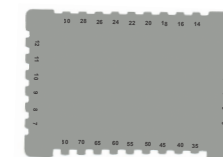


Feed Type	Fluid Tip	Application Pressure	Fluid Delivery
Siphon Feed	1.6-1.8 mm	40-50 psi	
Gravity Feed	1.6-1.8 mm	30-40 psi	
Pressure Feed	1.4-1.8 mm	50-60 psi	12-16 oz/min
Air Assist Airless	13-15 Thou	1000-1800 psi	
Airless	13-15 Thou	1700-3000 psi	



6 Application

Recommended Film Thickness



**5.0 - 8.5 mils wet
(Unreduced)**



3.0 - 5.0 mils DFT